

PERI scope

The magazine for the construction industry



In Focus

**PERI UP FLEX and LIWA
for the largest metro station in Asia**
BKC Metro Station, Mumbai



Dear Reader,



PERI India celebrated its 15th Anniversary. Our presence across the segments and geography was not possible without your support. What has made us so successful is that in everything we do, we always think first and foremost of the benefits for our customers. A cooperation based on partnership and trust is a fundamental value in our company, which therefore also forms the basis of our customer relationships.

We are glad to present before you the 2023 edition of PERI Scope. For over 50 years now, the PERI brand has stood for cutting-edge technology, innovative strength and close customer proximity. With entrepreneurial thinking, reliability, and our passion for our customers, we have become one of the leading manufacturers and suppliers of formwork and scaffolding systems.

It has been quite a while since the outbreak of Covid-19, the world has adopted a new style of living and different policies have been implemented to help with the economic recovery. At PERI, we have become even more stronger by overcoming challenges of difficult time and adapting to market needs. We want to assure you that we have a professional team that is always ready for any situation.

With Government impetus on infrastructure and rapid urbanization, more and more modern infrastructure projects and high-rise buildings will be seen across

India. There is streamlining in construction methodology and rush to complete project in time. Modern construction demands technologies that are faster, safer, and more innovative.

Our innovative product launches, presence across the geography and ability to service faster has delighted customers for every opportunity we gain to serve. We have set up R&D center in Pune with a team of experienced professionals. The team is involved in development of new products for India as well as for global markets. We continue to expand our offices in Mumbai, Delhi, Chennai, Bengaluru, Kolkata, Pune, Ahmedabad and resident engineers in other metro and tier II cities. The well-established logistic network across India has granted us greater flexibility in handling our customer's projects.

I once again express my profound gratitude to all our esteemed stakeholders for your continued support. We will ensure that PERI will always be your trusted partner for all your formwork, scaffolding and engineering solution needs.

A handwritten signature in black ink, appearing to read 'Raj Lakhani', with a horizontal line underneath.

Mr. Raj Lakhani
Managing Director
PERI (India) Pvt Ltd

Content

Editor

PERI (India) Pvt Ltd
1406, DLH Park, S.V. Road,
Goregaon (W), Mumbai,
Maharashtra 400062
Tel: +91 (22) 2876 7400

Responsible

PERI (India) Pvt Ltd

Editor-in-chief

Dhaval Suthar

Editing and graphics

PERI (India) Pvt Ltd

Photos

PERI (India) Pvt Ltd

Print

IN en | 2023

Copyright

The photos used in this brochure feature certain situations at particular moments on various construction sites. Additional images, e.g. regarding safety and anchor details, cannot always be considered as conclusive or final. These are subject to the risk assessment carried out by the contractor.

© PERI SE



- 6 PERI UP FLEX and LIWA for the largest metro station in Asia**
BKC Metro Station, Mumbai



- 8 HANDSET Alpha for the largest sewage treatment plant in Asia**
Okhla STP, New Delhi

- 9 ALPHADECK for flat slabs of IT commercial complex**
Prestige Lakeshore and
Prestige Tech Park, Bengaluru

- 10 PERI UP MI for 1.2 m thickness roof slab at 9.07 m height**
Seepz Metro Station, Mumbai

11 Dam structure with single sided climbing system
Kaleshwaram Dam, Telangana

12 Holistic solution for corporate house
LIC Corporate House, Gandhinagar

13 PERI UP MI for nuclear power plant
Rooppur Nuclear Power Plant, Bangladesh

14 RCS climbing system for core area
Lodha Alpha, Mumbai

14 Fair-faced concrete solution for largest retail store
IKEA, Bengaluru

15 Elevator testing tower with RCS system
Fujitec Testing Tower, Chengalpattu

16 RCS with edge protection for high-rise building
Dosti Eastern Bay, Mumbai

16 Crane-free panel formwork solution for refinery
HPCL Refinery, Nachna

17 Bridge piers for the longest sea bridge in India
Mumbai Trans Harbour Link, Mumbai

18 Core climbing solution for composite structure
Earth Enclave, Mumbai

18 Unique bridge solution with PERI UP
Pune Airport Bridge, Pune

19 Versatile panel formwork solution for STP
Sewage Treatment Plant, Ayodhya and Kota

20 Educational building with fair-faced concrete
Bandhan Bank Head Quarter, Kolkata

20 Comprehensive formwork solution for HQ
Indian Institute of Technology, Tirupati

21 Metro bridge pier cap with PERI Shore
Ahmedabad Metro, Ahmedabad

21 Modular panel formwork for irrigation project
Bheri Babai Irrigation, Nepal

22 News





PERI UP FLEX and LIWA for the largest metro station in Asia

BKC Metro Station, Mumbai

Mumbai Metro, Colaba–Bandra-SEEPZ line is a part of the metro system under construction in Mumbai, India. When completed, the 33.5 km length will be the first underground metro line in Mumbai. Bandra Kurla Complex (BKC) metro station is going to be a very important hub and it will be a key interchange. Once completed, it will be Asia's largest metro station.

BKC metro station is approx. 500 m in length and 32 m in width with 2 nos. underground floors. Base to concourse floor is 8.4 m height with 750 mm thick slab and concourse to roof is 5.5 m height with 1200 mm thick slab. Project required formwork solution with single sided application for retaining walls with maximum length to be covered. In addition, no through Tie rods were allowed for the walls. PERI provided solution with LIWA with SCS (Single Sided) climbing system for retaining walls. 24 m length walls with 4.5 m height was cast in single pour. Columns of 8.4 m height was cast with PERI LIWA system in one pour. Another challenge for the project was to construct large slab area with 1.2 m thickness roof slab at 8.4 m height and 750 mm thick concourse slab at 5.5 m height. PERI provided solution with PERI UP Flex shoring with Table form for slabs. 27 m length, 32 m width and 1.2 m thick slab was cast in single pour. Project had very strict timeline of completion in 14 months. With PERI solutions, project is managing timeline efficiently with excellent concrete finish.

PERI provided complete formwork solution for the project. LIWA with SCS (Single Sided) climbing system for retaining walls, PERI UP Flex with Table form for slabs and LIWA for higher height columns was supplied to project.



Mr. Somesh Pandey
Project Head – J. Kumar Infraprojects Limited

„Bandra-Kurla Complex (BKC) is Asia’s largest metro station. We were looking for formwork material which gives complete solution and also makes sure adherence to strict project timeline with pour to pour cycle time of 25 to 30 days. With PERI’s formwork solution, we could achieve our planned cycle time. System formwork also ensured lesser manpower at site to execute such large scale project compare to convention formwork system. Along with good quality material it was great co-operation with PERI design and site engineers through out the project.”



HANDSET Alpha for the largest sewage treatment plant in Asia

Okhla STP, New Delhi



Once completed in the year 2023, this 564 MLD plant at Okhla, Delhi will be the largest capacity STP in Asia. Designed & Built on state of the art technologies, it will produce a very high quality water as per international standards. The plant will utilize UV system to treat & disinfect the water and make it pollution free. The plant will generate 5 MW of green energy which will be used to run the plant. The byproduct sludge will also be of High class – A quality, for safe use by farmers as manure. This plant will be fully Automatic with SCADA Control for remote operation.

Okhla plant has 150,000 m³ of concrete works. It was not possible to complete this large concrete quantity in conventional way of construction. Also, customer wanted to cast large pours of 4.50 m to 7.00 m high and 30 m long in one single go. Also, the formwork needed to be designed for self-compacting concrete for higher height walls and concreting with boom placers. The formwork should work independent of crane.

PERI Provided complete formwork solution for the project. Newly launched HANDSET Alpha for 4.50 m to 7.00 m height walls was provided for the project. Along with the system solution, site supervision support and training support was provided to customer.



„Okhla plant has 150,000 m³ of concrete works. It was not possible to complete this large concrete quantity in conventional way. Hence, we decided to go for PERI system formwork for our critical path structures. It helped us to cast large pours of 4.50 m to 7.00 m high & 30 m long walls. Finishing quality of the concrete works after usage of PERI HANDSET ALPHA are in line with International standards. We are very happy for the decision made by us for the usage of PERI formwork.“

Mr. Dushyant Sharma, Project Director – SUEZ India Pvt. Ltd.



ALPHADECK for flat slabs of IT commercial complex

Prestige Lakeshore and
Prestige Tech Park, Bengaluru



Mr. M. Chandrashekar
DGM Projects - K2K Infrastructure Pvt Ltd

„With ever evolving construction requirements and challenges, there is a need to move to advanced modular light weight formwork technology. For this prestigious project, we adopted PERI ALPHADECK. It has helped us in overcoming challenges like labour shortage, lack of skilled man power and provided high labour efficiency. The solution we received has various advantages for the project – it provided much needed speed of construction, excellent quality of concrete surface finish and better cost effectiveness with high repetitive use.“

Prestige Lakeshore and Tech Park is spread across 8.925 acres of prime land along the Marathahalli-Sarjapur outer ring road of Bengaluru and is part of the overall Prestige Tech Park master plan. The Tech Park is located in the neighborhood of large software companies, business establishments, entertainment centers to mention a few. Located on the national highway-44, kodbisanhalli is a developed corporate hub in the Bangalore East. It houses some of the top multi-nationals.

Prestige tech park current expansion includes a total area of 6000 m² and comprises of two buildings. Each building is 62.30 m high and consists of 2 basement and 12 floors. Total slab area at the basement level is 2700 m² and at the ground floor level is 2160 m². Slab formwork solution needs to take care various floor to floor heights. Floor to floor height of upper basement to lower basement is 3.75 m, lower basement to ground floor is 4.75 m, ground floor to 1st floor is 4.50 m and typical floors are 3.75 m height. Customer was looking for the comprehensive formwork solution that provides good concrete surface finish and faster cycle time.

PERI provided complete formwork solution for the project including slab, beam and column capital. PERI ALPHADECK was used for slabs of 200 mm thickness. For beam and column capital MULTIFLEX system was used. ALPHADECK being a lightweight formwork helped in achieving better labour efficiency at site with excellent concrete finish.

PERI UP MI for 1.2 m thickness roof slab at 9.07 m height

Seepz Metro Station, Mumbai

Mumbai Metro, Colaba-Bandra-SEEPZ line is a part of the metro system under construction in Mumbai, India. When completed, the 33.5 km length will be the first underground metro line in Mumbai. Seepz metro station connects the IT hub of north central with business district in the extreme south of city.

Contractor L&T STEC JV



Seepz metro station is underground station approx. 242 m in length and 21.20 m in width. It was complicated underground station considering the running traffic above and managing service rerouting. It was challenging project in terms of design with practical difficulties of various horizontal truss to support the sidewall and vertical support for keeping traffic moving. In addition, project completion timeline was 9 months. PERI provided solution with LIWA with SCS (Single Sided) climbing system for retaining walls. 10 m length walls with 3.69 m height was cast in single pour. Another challenge for the project was to construct large slab area with 1.2 m thickness roof slab at 9.07 m height and 600 mm thick concourse slab at 6.75 m height. PERI provided solution with PERI UP MI shoring application. PERI UP MI offered flexibility to design individual shoring tower of different height as per the base.

PERI provided complete formwork solution for the project. LIWA with SCS (Single Sided) climbing system for retaining walls, PERI UP MI for shoring application of slabs, PERI UP Flex with Table form for slabs, DUO for retaining wall and columns and SB brace frame with LIWA for retaining walls was supplied to project.



„We know the solution capability as well as high standard of service of PERI. For this prestigious project, the formwork solution was perfect in all aspects especially the DUO shuttering system – it provided our site personnel with a high level of safety, was easy to install as well as offered faster cycle time and good concrete finish. It's my pleasure to be associated with Team PERI and thank the team for unequivocal support for the shaping up of SEEPZ station/Ramp section.“

Mr. B Prabhakar, General Manager & Head(UGC07) Construction - L&T STEC JV UGC-07 Project



The challenge for the project was to cast wall with more than 50 m height and 90 m length with inclination of 30 degrees.

PERI provided solution with SCS climbing system for the project. The solution was offered without any tie and the brackets

were acting as working platform for rebar fixing and formwork erection and striking. The solution does not need dismantling of wall formwork and SCS while lifting. PERI supplied 40 units of SCS along with VARIO wall formwork for the project.

PERI provided complete solution for the project. With its engineering and site supervision support, all challenges at site are well addressed. PERI solutions also ensured ease of handling and timely completion of the project.

Contractor
KNR Constructions Ltd

Dam structure with single sided climbing system

Kaleshwaram Dam, Telangana

Government of Telangana has come up with a lot of irrigation projects. Kaleshwaram dam is one such project to ease out water issues for the people of Telangana. It is a non overflow dam having walls at inclination of 30 degrees down stream side.

Holistic solution for corporate house

LIC Corporate House, Gandhinagar

Life Corporation of India is coming up with ground plus 25 floors iconic corporate house in GIFT city, Gandhinagar with a total construction area of 30,500 sqm.

They were looking for holistic formwork solution provider for the project. PERI provided complete solution for slab, beams and material lifting. MULTIFLEX with beam head and PERI UP MI was provided for the slab and beam solution. For lifting material, RCS material lifting solution was provided.

Contractor
Ramesth Construction &
Patel Infrastructure Pvt. Ltd. (JV)



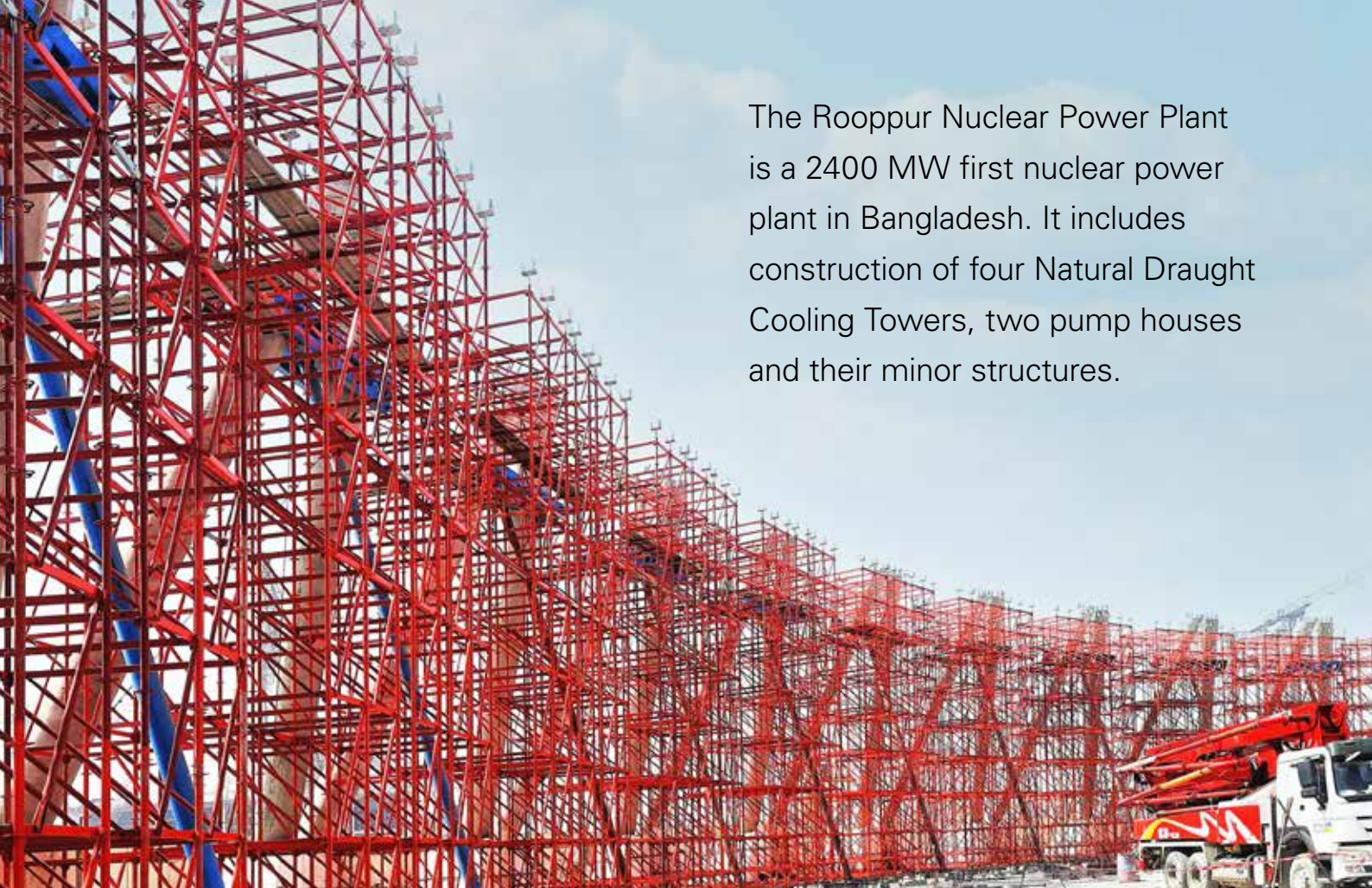
Mr. Dineshbhai Vaviya
Director, Patel Infrastructure Pvt. Ltd.

„PERI system has performed very well in this project. With support of PERI systems, their technical solution as well as site support, we have achieved desired project timeline for LIC. PERI Team has supported us from beginning to end achieve better results. We will consider partnership along with PERI for our future needs.“



Mr. Ramesh B Morobiya
Founder - Ramesth Construction

„The GIFT City – L.I.C House project was completed as sub-contractor under Patel Infrastructure Pvt. Limited. In this project, PERI formwork was used for the first time by us. This formwork installation and removal is very easy. It reduced time of the casting cycle and gave a smooth surface without any undulations. As per our planning, we achieved a slab cycle in 11 days that saved time and the project cost. Overall experience is very excellent and also in future, we will prefer this type of formwork in residential as well as in commercial projects.“



The Rooppur Nuclear Power Plant is a 2400 MW first nuclear power plant in Bangladesh. It includes construction of four Natural Draught Cooling Towers, two pump houses and their minor structures.

Contractor
Paharpur Cooling Towers Ltd

PERI UP MI for nuclear power plant

Rooppur Nuclear
Power Plant, Bangladesh

PERI provided solution for Ring beam and Pump house with PERI UP MI as the Shoring system. PERI UP MI is highly efficient and cost effective shoring system and requires less skilled manpower during assembly of shoring towers. It comes with Gravity lock technology which ensures safe installation. Along with system, PERI provided design support and site supervision for smooth execution of the project.

PERI UP MI

Modular shoring and scaffolding system for every application

PERI UP MI is an innovative solution among the steel scaffolding systems and stands for quick and simple assembly. It is adaptable to suit all geometries and applications like facade scaffolding, shoring towers and access scaffolding.

PERI UP MI is a modular and flexible system with gravity lock technology which allows easy and safe assembly. Assembly of the system takes place virtually without couplers whilst the self-locking system reduces assembly time.



RCS climbing system for core area

Lodha Alpha, Mumbai

Lodha Alpha is a Grade A commercial project in Lower Parel. The project required to build core at faster pace. Core needed to move ahead of slab which was built in composite structure.

PERI provided solution for core wall with RCS with VARIO wall formwork. PERI RCS system was adopted to get smooth and safe site execution with formwork height of 4.40 m. Solution with system formwork carrying boom placer was provided for the project. Boom Placer was attached with PERI ACS system which was carrying weight of boom placer without crane that saved huge time in lifting the boom placer separately.



Contractor Eversendai Construction Private Limited

Fair-faced concrete solution for largest retail store

IKEA, Bengaluru

Global Swedish home furnishing retailer IKEA opened its third and largest store in India, in Bengaluru. It is spread over 12.2 acres, the 460,000 sq ft IKEA Nagasandra store.

PERI provided solution with SKYDECK for slab formwork, VARIO for column formwork and DUO for retaining walls.

With PERI formwork solution contractor could achieve faster cycle time, good concrete finish. SKYDECK being a lightweight aluminium formwork helped in achieving better labor productivity at site.



Contractor
Shapoorji Pallonji & Co Ltd



Contractor Hariharan Foundations (P) Ltd.

Elevator testing tower with RCS system

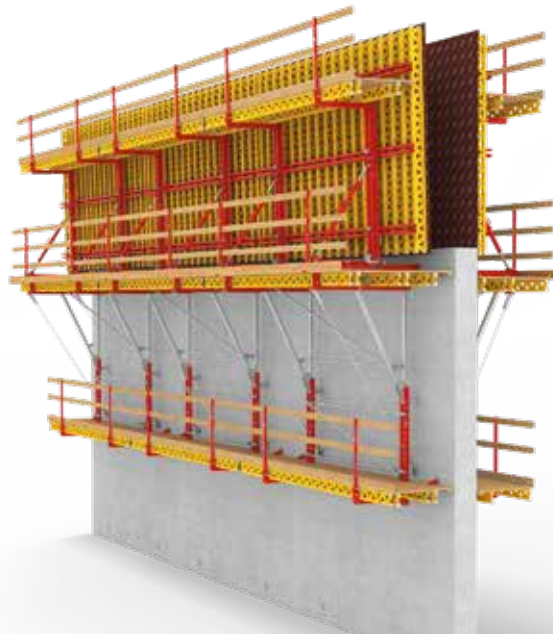
Fujitec Testing Tower, Chengalpattu

Fujitec India Pvt. Ltd in Chengalpattu near Chennai has constructed a testing tower for checking the vertical movements of Lifts and awarded the civil contract to M/s. Hariharan Foundations (P) Ltd.

A testing tower is a high-rise tower with a structure height of 84.9 m and a plan dimension of 14.75 m x 14.3 m. Customer required a faster cycle time to complete the structure on time. So, PERI provided a formwork solution with RCS self-climbing platforms and a VARIO wall formwork system. PERI provided complete formwork solution for the project.

PERI SCS System for single and double-sided application

SCS serves as a load-bearing structure for supporting single-sided, non-tied or double-sided, anchored wall formwork. The SCS Climbing System is characterized by a high level of cost-effectiveness as the modular concept with multi-piece brackets facilitates optimum adaptation to suit project-specific requirements and geometries. Concreting and following platforms can be inclined at $\pm 15^\circ$ and $\pm 30^\circ$. Few significant advantages are, large crangible climbing units, material – optimized solution and safe horizontal working areas.



RCS with edge protection for high-rise building

Dosti Eastern Bay, Mumbai



Dosti Eastern Bay is a meticulously planned project by one of the reputed developers in Wadala. The project has complicated structure with non typical periphery fins in concrete. Customer was looking for safety screen solution with 3 levels of platform and crane independent climbing.

PERI provided solution with hydraulic climbing RCS P system. PERI supplied total 35 units of RCS P edge protection system and 23 units of BR shaft crane climbing unit for the project. 2875 m² of peripheral area was covered with edge protection system. Solution was offered with 2 nos. out triggered platforms for material lifting.

Contractor Talib & Shamsi Construction Pvt Ltd

Crane-free panel formwork solution for refinery

HPCL Refinery, Nachna

HPCL Rajasthan Refinery Ltd is a Joint Venture between Hindustan Petroleum Corporation Limited (HPCL) and Government of Rajasthan (GOR). The project involves setting up of a Green-field 9 MMTPA refinery cum petro chemical complex at Pachpadra in Barmer district of Rajasthan.

Overall project was planned to be completed in 16 months time and the client had specific requirement for light weight modular formwork system. Also tower crane was not available at every section of the site. Hence, formwork solution had to be crane free.

PERI provided complete formwork solution with HANDSET Alpha system for walls, columns and foundations and innovative PERI UP MI for shoring and scaffolding application.

Contractor Chevrox Construction Pvt. Ltd.



„During the design stage PERI had given us their extensive expertise on designing the system for the project. With PERI system such as HANDSET Alpha for vertical formwork & PERI UP MI with UZR solution has helped & allowed us to meet the project's schedule demands and tight tolerances. The main advantage that we receive is the time saving, labour cost reduction with safety. we can appreciate team PERI for their technical, site & after sales support. We will love to involve PERI as our formwork partner for our future projects.“

Mr. Mit Viramgama, CMD – Chevrox Construction



Bridge piers for the longest sea bridge in India

Mumbai Trans Harbour Link, Mumbai

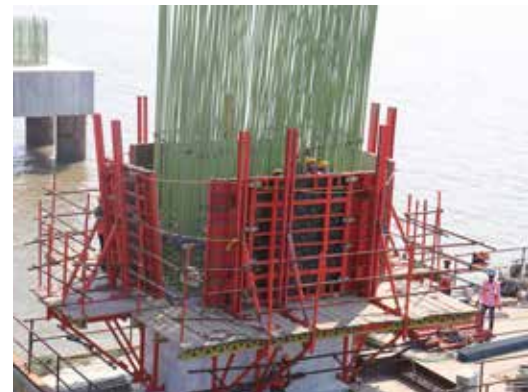
The Mumbai Trans Harbour Link, also known as the Sewri–Nhava Sheva Trans Harbour Link, is an under-construction 21.8 km 6-lane expressway grade road bridge, which will connect Mumbai with Navi Mumbai, its satellite city. When completed, it would be the longest sea bridge in India.

The iconic project required solution for hollow bridge piers with high pouring height. The solution had to be operated with crane and required less components to be handled at site.

PERI provided solution with TRIO system in combination with special steel panels for bridge piers. The formwork solution was designed for 7.50 m pouring height and 80kN/m² concrete pressure. The solution was crane handled with four level of platforms and TRIO formwork.

PERI also provided PERI UP FLEX stair tower solution for access. PERI UP FLEX is easy to install scaffolding system and offers utmost safety with the “gravity lock” and self-locking decks. The staircase is ideally suited for large numbers of users.

PERI provided ZEMDRAIN CPF liner along with formwork solution which offers blow hole free concrete surface and increases the structure life. Along with the system solution, site supervision support and training support was provided to customer.



Core climbing solution for composite structure

Earth Enclave, Mumbai

Earth Enclave is one of its kind high-rise residential project with composite structure. Customer wanted to construct the building faster in 20 months. Hence, core area was taken ahead of the balance structure.

RCS core climbing system was offered for the project to take core ahead of the balance structure. Both rehab tower and sales tower were taken 3 floors ahead of slab structure. Hanging staircase with RCS system was provided to access with working platform. Boom Placer was attached with PERI ACS system to carry it without crane that saved huge time in lifting the boom placer separately. PERI HANDSET Alpha was used for retaining wall and steel columns encasing.



Developer Earth Group

Unique bridge solution with PERI UP

Pune Airport Bridge, Pune



Pune Airport has come up with multi level car parking facility. The car parking building required foot over bridge to connect with airport terminal. The bridge has to be constructed over a moving traffic without obstructing it.

PERI provided solution with PERI UP shoring tower and RCS rails to support the bridge segment formwork. The bridge needs to cover 20.00m span in length over a existing road with only one support at middle. PERI engineering solution ensured safe and quick installation of system. Along with system, PERI provided design support and site supervision for smooth execution of the project.



„This was a very special and challenging project for us as the work has to be executed without obstructing running traffic below. I rate PERI's contribution very high for the project. PERI provided complete formwork solution as per the project need. Overall solution and site support from PERI engineers helped in better cost-competitiveness.“

Mr. Saurabh Jangle, Director – S J Contracts Pvt Ltd

Contractor
S J Contracts Private Limited



Versatile panel formwork solution for STP

Sewage Treatment Plant, Ayodhya and Kota

There were two Sewage Treatment Plant of 49 MLD and 11 MLD planned in Kota and Ayodhya respectively. It required a versatile solution as the structures were having inclined walls and curved walls along with regular structure.

PERI provided a solution with HANDSET Alpha panel formwork. It is easy to handle and ergonomic in all aspects. Inclined walls and curved walls up to 3.60 m height were cast in single pour with the HANDSET Alpha formwork system. Optimum panel sizes ensured effective utilization and better productivity at site. It also provided the required quality of concrete finish and repetitions of use.

Contractor
Enviro Infra Engineers Private Limited



„The overall experience of using the PERI system was very great. The ease with which the labour is doing the shuttering at site is unthinkable. The number of support members are very less as compared to conventional shuttering which in turn reduces the overall construction time of the project.“

Mr. Sanjay Jain
Director – Enviro Infra Engineers Private Limited

Educational building with fair-faced concrete

Indian Institute of Technology, Tirupati



The Indian Institute of Technology (IIT) in Tirupati came up with new campus that is spread across area of 530 acres. The project comprised of total 15 blocks including Academic, Residential Buildings, Utility buildings, Sports complex, and Landscaping.

The project required entire peripheral walls of all the buildings in F3 class of concrete finish along with the various grooves running along the walls.

PERI provided VARIO wall formwork solution for fair-face concrete for the project along with elevation pattern, tie hole location and groove as per the requirement of architect and IIT team.

Contractor
JMC Projects (India) Pvt Ltd

Comprehensive formwork solution for HQ

Bandhan Bank Head Quarter, Kolkata



Bandhan Bank Ltd., banking and financial services company is constructing their head quarter building in Kolkata.

The contractor was looking for a reliable and comprehensive formwork solution provider for the project as it involved complex structural elements.

PERI provided complete solution for the project with ALPHADECK system for slab, VARIO system for inclined columns all around the periphery, HANDSET Alpha for vertical columns and BR shaft platforms.

Contractor
Ahluwalia Contracts India Limited



Metro bridge pier cap with PERI Shore

Ahmedabad Metro, Ahmedabad

Ahmedabad Metro is a rapid transit system for the cities of Ahmedabad and Gandhinagar in Gujarat state of India. The elevated corridor required solution for pier cap construction.

PERI provided solution for pier cap with PERI Shore shoring system and VARIO. PERI Shore is an efficient shoring tower with high leg loads and system-integrated safety. Also, it comes with Gravity lock technology which ensures safe installation. Along with system, PERI provided design support and site supervision for smooth execution of the project.



Mr. M Raja Babu
Project Head – Vibrant Construction

„With conventional system it would need about 38 man hours and 30 machinery hours, which was reduced to 18 man hours and 2 machinery hours due to the PERI design with robust light weight material and technical as well as site support. Eventually adding speed and perfection to our metro pier Cap construction.“

Contractor
Vibrant Construction Private Limited

Modular panel formwork for irrigation project

Bheri Babai Irrigation, Nepal



Bheri Babai Diversion Multipurpose Project (BBDMP) is a multi-basin irrigation cum hydropower project situated in Surkhet District of Karnali Province in Mid-West Nepal. The project required solution with modular panel formwork. The formwork had to be crane independent due to non availability of crane.

PERI provided solution with HANDSET Alpha panel formwork. It is a lightweight panel formwork system with unique panel to panel connections. HANDSET Alpha provided the highest flexibility in the construction of walls and with optimal material utilization and easy handling by only two people.

Contractor Raman General Private Limited & Guangdong Yuantian JV

News

Seminars and Events



Confederation of Indian Industry (CII), India's Premier Industry Association had organized Excon 2022 between 17th – 21st May 2022 at Bengaluru. It is an International Exhibition & Conference on Construction Equipment & Construction Technology. 2022 was the 11th edition of the exhibition.

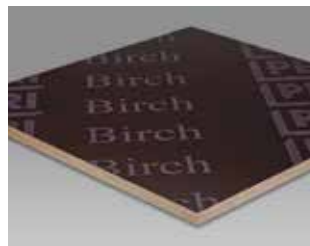
PERI India participated in the exhibition and showcased portfolio of formwork and scaffolding solutions. The exhibition got an overwhelming response from the visitors and appreciation for PERI's innovative formwork technology.

PERI Components

Accessories and commodities for daily use at construction sites



Girders



Plywood



Props



Tie System

PERI has range of accessories from grades of plywood to release agents. With these various system components PERI offers support to all kinds of construction sites.

15th Anniversary Celebration



PERI Team India celebrated 15th Anniversary of successful presence in India.

It was celebrated together with GGF team members Advisory board members, Customers across the country and entire PERI India Team.



PERI – The service provider, offering more than just products



Rental Service

Large rental fleet with cleaning and repair services



Pre-Assembly Service

Systems can be pre-assembled at PERI facilities and sent on-site



Engineering and Software

Efficient formwork planning and design through use of PERI CAD software



Site Supervision

Provided to ensure efficient use of systems



Formwork Scaffolding Engineering www.peri.in

